

Substance Misuse Health and Adult Services Select Committee

Simon Bryant

Associate Director of Public Health

Ileana Cahill

Public Health Principal

Hampshire County Council

Aims

- Overview of the issue
- Prevalence & impact of substance misuse in Hampshire
- Hampshire Substance Misuse Strategy
- Service transformation in Hampshire





Drugs



Alcohol



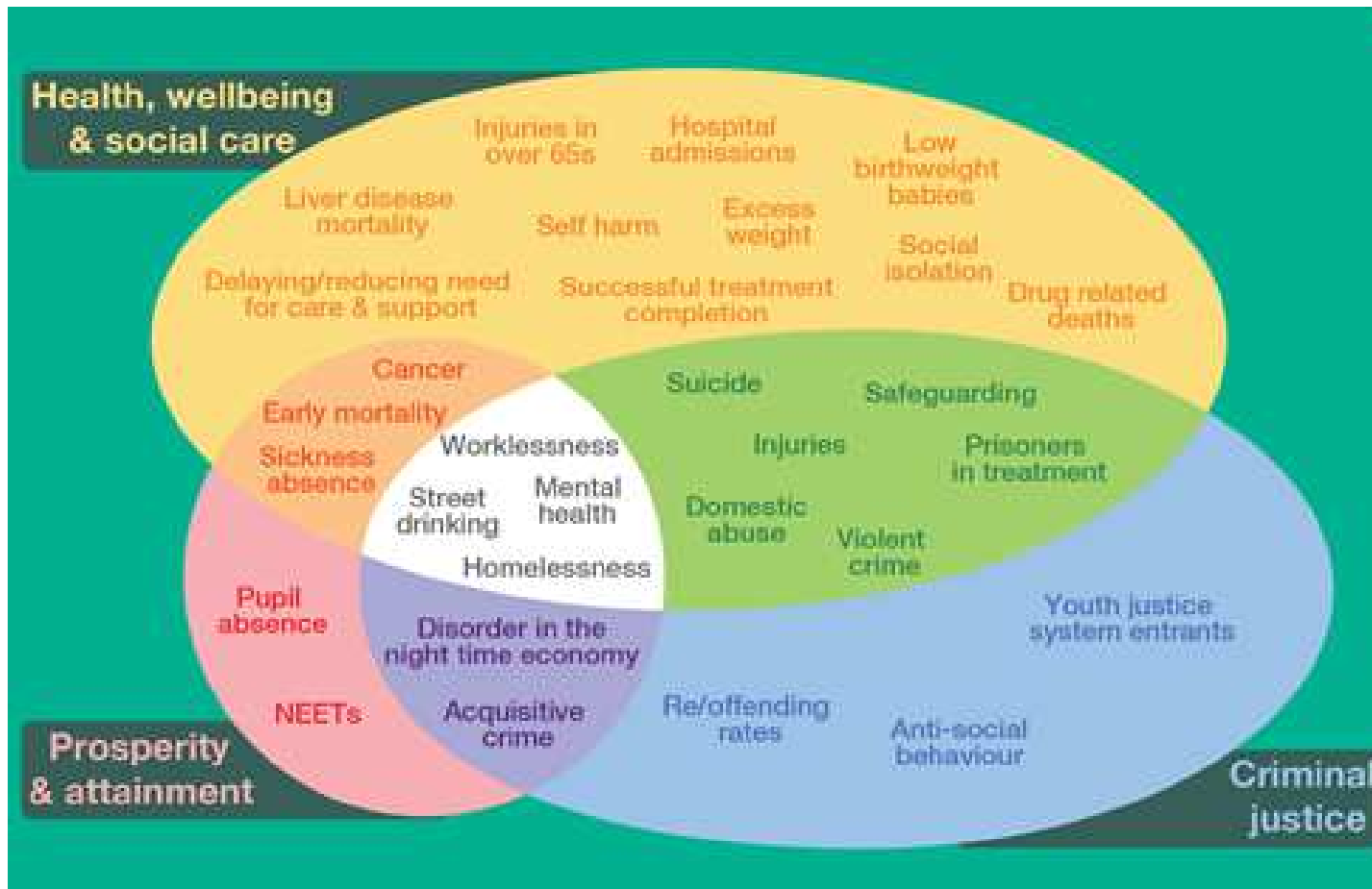
Solvents



NPS



Prescription drugs



Prevalence in Hampshire

Alcohol problems are widespread

Across Hampshire, an estimated

27%

of adults drink at levels that increase their risk of health harm

9,890

may need treatment for alcohol dependence

23,000

alcohol related admissions to hospital in 2015/16

The impact of harmful and dependent drinking is greatest in deprived communities



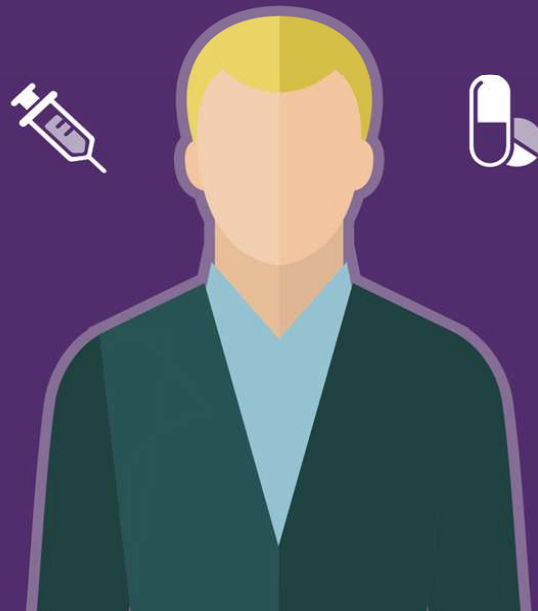
Prevalence in Hampshire

Drug use is widespread but dependence is concentrated

Across Hampshire, an estimated

4,043

opiate and/or crack cocaine users
and 1,063 inject opiates



Around

35% of opiate users

are not in treatment

143

deaths from drug misuse between
2014 and 2016

Over 50%

were due to opiates

The most deprived local authorities have
the highest prevalence of problematic
drug users



Alcohol and drug use in school children



Around **49%** of Hampshire school children aged 11-15 years had consumed alcohol compared to 38% nationally

50% of young people who accessed specialist young people's substance misuse services started their problem substance by age 15

8.7% of young people (aged 11-15 years) reported having ever taken cannabis

3.2% of young people (aged 11-15 years) reported having ever taken psychoactive substances


Impacts and costs in Hampshire



3,000 adults and **260 young people**
are currently in substance misuse treatment

Economic and social savings generated from drug
and alcohol treatment equate to over **£22 million**
per year

Homelessness and benefit claimants



Over **80%** of homeless people in Hampshire were identified as having a substance misuse support need

Approximately **500** people in Hampshire who are claimants of Incapacity Benefit / Severe Disablement Allowance or Employment and Support Allowance have alcohol misuse given as the main disabling condition

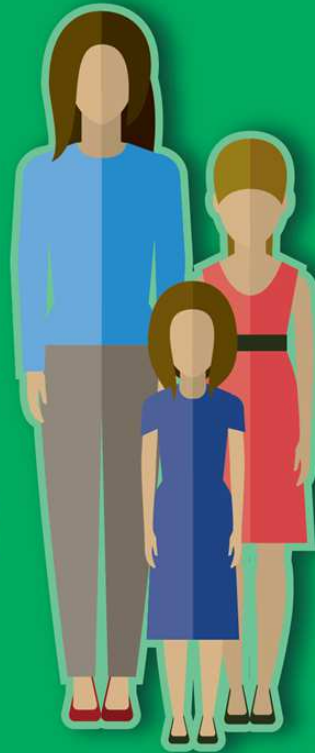


Impact of drug & alcohol misuse on families

Page 10

Parental alcohol and drug dependence significantly harms the wellbeing of children

20% of children in need in Hampshire are affected by drug misuse and 18% by alcohol abuse



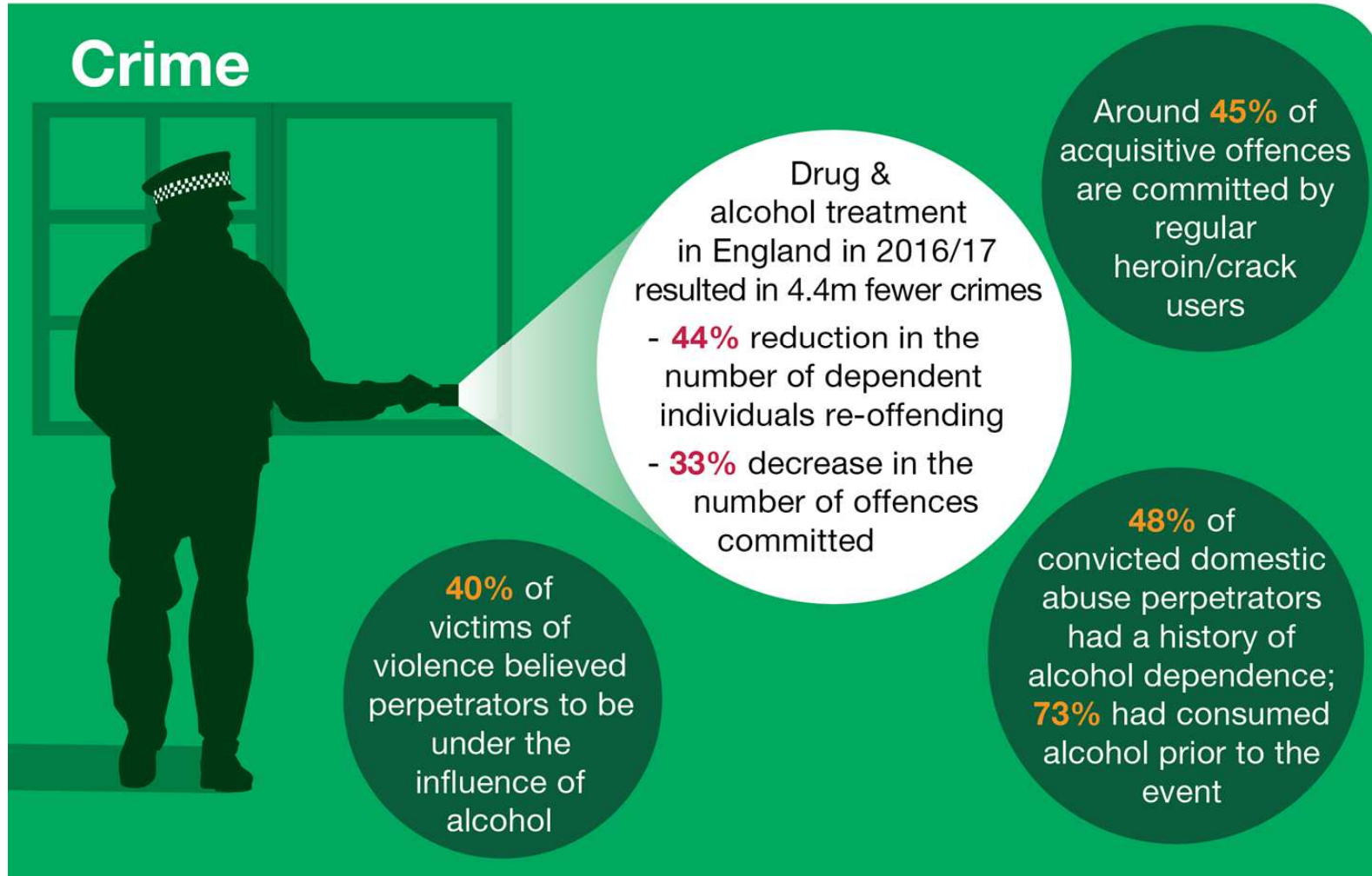
Misuse can impact on health & wellbeing, education, risky behaviours, and result in inappropriate caring roles



Hampshire
County Council

www.hants.gov.uk

Drug and alcohol misuse harms communities



Hampshire Substance Misuse Strategy:

Prevent and reduce the harm associated with substance misuse (to individuals, their families and communities) and increase the opportunities for recovery for those dependant on drugs / alcohol.

Priorities

- Priorities determined by the National Drugs Strategy 2017 and local assessment of alcohol across the system:
 - Prevention, Early Intervention Behaviour Change
 - Keeping Communities Safe
 - Better Recovery

Hampshire's Substance Misuse Service

Empowering and enabling people to successfully manage and recover from their alcohol and/or drug dependency and the wider impacts of these.

- People successfully completing treatment and becoming drug and/or alcohol free
- Reduce the harms associated with alcohol and drug use and dependency and improve health and wellbeing
- Reduce health inequalities in Hampshire
- Reduce the harms to children and families
- Support complex clients to enable recovery
- Build safer stronger communities that support the recovery agenda within the criminal justice system
- Reduce the stigma of accessing substance misuse services
- Provide a modern service

Key elements of the Service

an adult substance misuse treatment service (medical and psychosocial interventions)

a specialist young people's substance misuse service (for people up the age of 25 years)

a pharmacy drug-treatment service.

Information, advice & brief interventions

Structured treatment

Accessible needle exchange provision

Harm minimisation

Peer mentoring programme

Recovery capital

Carer and family support service

Access to in-patient detoxification

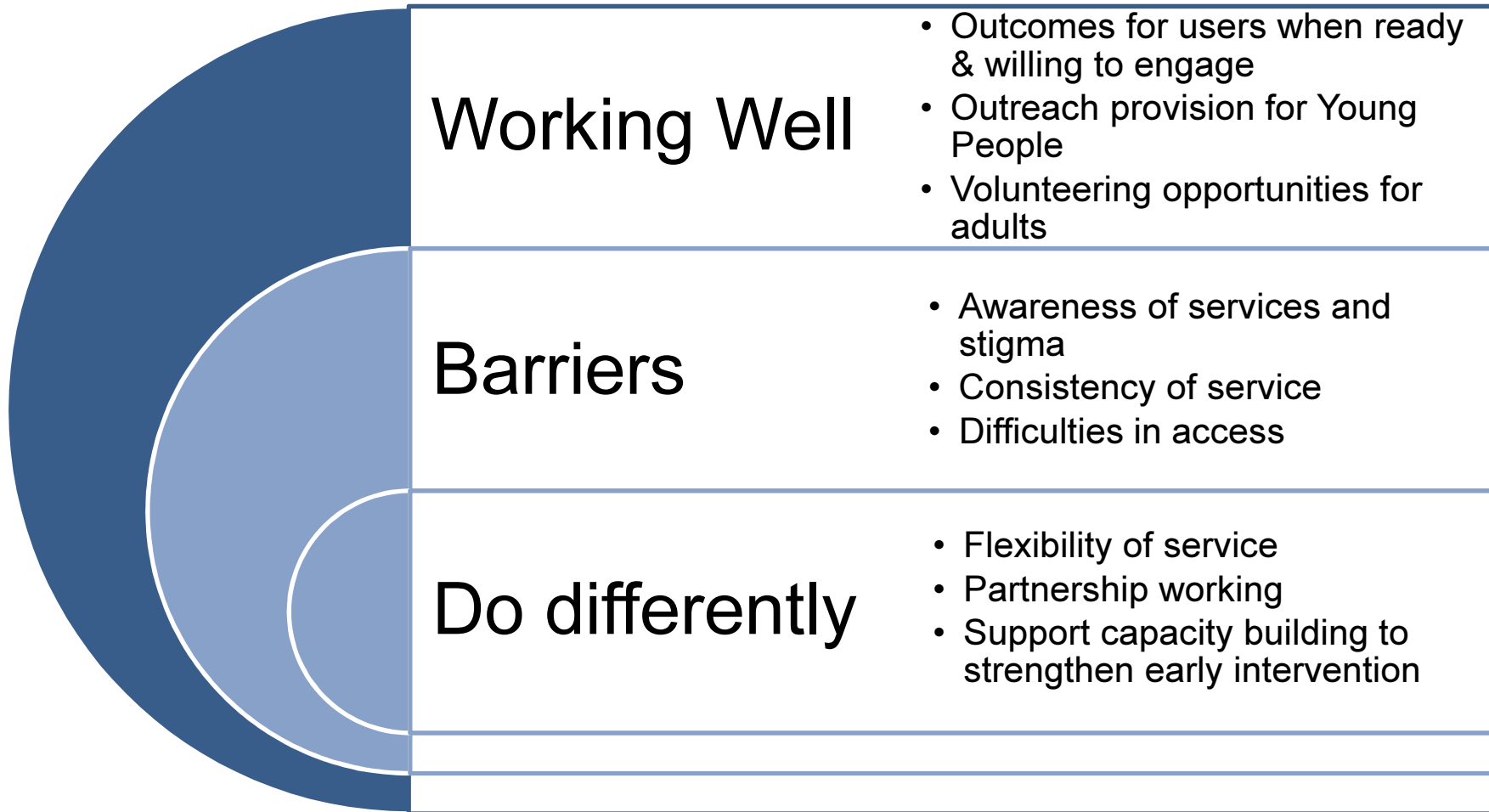


Hampshire Substance Misuse Service



What do people tell us about current services?

Page 17



Service Transformation

Alcohol

Adopting a whole family approach

Offering a holistic children and young people's substance misuse service up to the age of 25 years

Working with complex clients to promote recovery

Offering a flexible model of delivery



Don't Bottle It Up

TAKE THE ALCOHOL TEST
It's free, quick and confidential
START ►

WELCOME
Find out what the site can offer you

SHOUT IT OUT
Join us on Facebook & Twitter

FREE DRINKCOACH
An app to track & change your drinking

HOW MUCH IS TOO MUCH?

DRINKING STORIES
Read & share 'never again' tales





 **inclusion recovery hampshire** 0303

We provide a free and confidential service to anyone over the age of 18 experiencing problems or wanting to know more about alcohol.
IRH@ssft.nhs or call 0300 303 3539 | inclusionhants.org



YOUR SCORE



You scored **28** out of **40**, which indicates your drinking is: **High Risk/Possibly Dependent**

For **High Risk/Possibly Dependent** scores such as this we recommend seeking advice and reducing your drinking.

You can do that by contacting your local alcohol service:

Inclusion Recovery Hampshire
Tel: 0300 303 3539

[Click to Access Free Help](#)

You are drinking **8.5** units on a typical drinking day.
You are consuming **562** calories from these units.

The government advises that men and women do not drink more than 14 units per week, with at least

WHAT CAN I DO NEXT?

	Find support near you		Download our free app
	Request a free follow up email or phone call		Watch our short advice clip
	Read more about YOUR drinking		Retake the test



Reducing drug-related deaths

- Provision of Naloxone (reverses effects of opioid overdose)
- Widely distributed to service users, carers, and agencies where with high risk clients (e.g. hostels)



To Conclude

- Leadership by the strategic drug and alcohol partnership
- New service model to meet new issues and trends
- Service robustly contract monitored through Public Health

